



MONTRA
— ELECTRIC —

125
Years Trust

of
murugappa

All New **SUPER AUTO**



10.6 kWh

Advanced Battery

**On Road
True Range
160 km***

**FULL
METAL BODY**

**60 Nm
Peak Torque**

5
YEARS

**SUPER SHIELD
WARRANTY***

1.75 Lac km



Super Spacious

24X7 Road Side Assistance

50 Paise per km



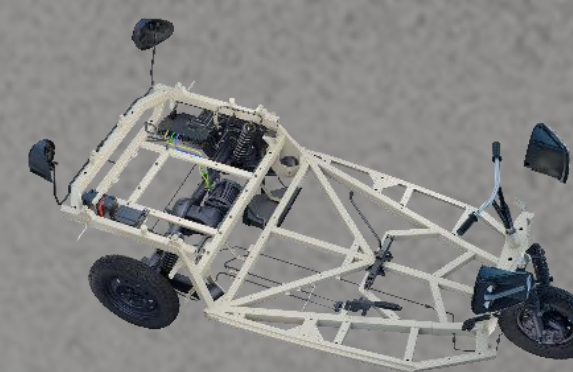
**5 Drive
Modes
with Park
Assist**



**LED
Tail
Lights**



**Ergonomic
High
Backrest
Seats**



**Strong
Boron
Steel
Chassis**

SPECIFICATIONS

| | Montra Electric |
|-----------------------------|---|
| Variant | ePL 2.0 |
| Seating Capacity | D+3 |
| Body Type | Metal |
| Chassis | Sturdy Boron Steel Chassis |
| Dimension & Weight | |
| Dimensions – L X W X H | 2825 mm X 1350 mm X 1750 mm |
| Wheel Base | 2010 mm |
| Ground Clearance | 207 mm |
| GVW | 781Kg |
| Kerb Weight | 481 Kg |
| Performance | |
| Top Speed | 55 Kmph |
| Gradeability (%) | 21% |
| Certified Range | 239 km |
| Typical Driving Range | 160 +/-5 Km |
| Regenerative Braking | Yes |
| Drive Modes | Park Assist / Eco / Drive / Power |
| Battery & Drive Train | Drive/Power/ Park Assist |
| Peak Power (kW) | 10 kW |
| Peak Torque (Nm) (At Wheel) | 60 Nm |
| Battery Capacity | 10.6 kWh |
| Charger Type | Off Board |
| Suspension & Safety | |
| Head Lamps | High Power Halogen Lights |
| Tail Lamps | Integrated Stylish LED Lights |
| Suspension - Front | Telescopic Hydraulic fork type with dual shox |
| Suspension - Rear | Swingarm suspension with Coil over damper |
| Brakes - Front / Rear | Hydraulic Drum Brake |
| Regenerative Braking | Yes |
| Tyres | 3.75 x 12 E 66 4PR |
| Comfort & Features | 12 4 PR 66E |
| Driver Seat | High Back Rest, Ergonomic Dual Tone Seat |
| Instrument Cluster | 4.3 Inch LCD |
| Glove Box | Yes, with Lock |
| Mobile Charging | 12V Socket |
| Passenger Seats | Dual Tone Seats with Backrest Tumble forward |
| Luggage Space | Rear Luggage cabin with tail gate |
| Warranty & Service | |
| Battery Warranty | 5 Yrs / 150000 km |
| Road Side Assistance | Included free for First Year |

About Murugappa Group

A 125-year-old conglomerate with presence across India and the world, the INR 778 billion (crore) Murugappa Group has diverse businesses in agriculture, engineering, financial service more.

The Group has 9 listed companies: Carborundum Universal Limited, CG Power & Industrial Solutions Limited, Cholamandalam Financial Holdings Limited, Cholamandalam Investment & Finance Company Limited, Coromandel International Limited, EID Parry (India) Limited, Shanthi Gears Limited, Tube Investments of India Limited and Wendt India Limited. Other major companies include Cholamandalam MS General Insurance Company Limited and Parry Agro Industries Limited. Brands such as Ajax, Hercules, BSA, Montra, Montra Electric, Mach City, Chola, Chola MS, CG Power, Shanthi Gears, CUMI, Gromor, Paramfos, Parry's are part of the Group's illustrious stable.

Abrasives, technical ceramics, electro minerals, electric vehicles, auto components, fans, transformers, signalling equipment for railways, bicycles, fertilisers, sugar, tea and several other products make up the Group's business interests.

Guided by the five lights integrity, passion, quality, respect and responsibility - and a culture of professionalism, the Group has a workforce of over 83,500 employees.

montraelectric.com



Authorised Dealer: